

déda | Exhibition & Gallery Space Information

General Information

- There are two Gallery areas at Déda where art can be displayed. Each area has its own exhibition boards. Work can not be fixed to any other part of the building.
- All the exhibition boards are constructed from 6mm MDF fixed off the wall so that they appear to float. All are painted with white emulsion.
- Work can be secured to the boards using nails, screws, mirror plates and staples. Blue-tack can be used for name plates etc. Velcro should be avoided.
- Tools, a cordless screw driver, ladders and some fixings are available.



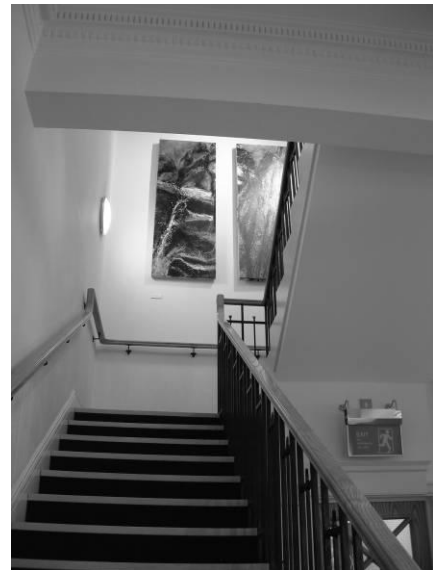
Main Entrance Lobby



L x 244 H x 231

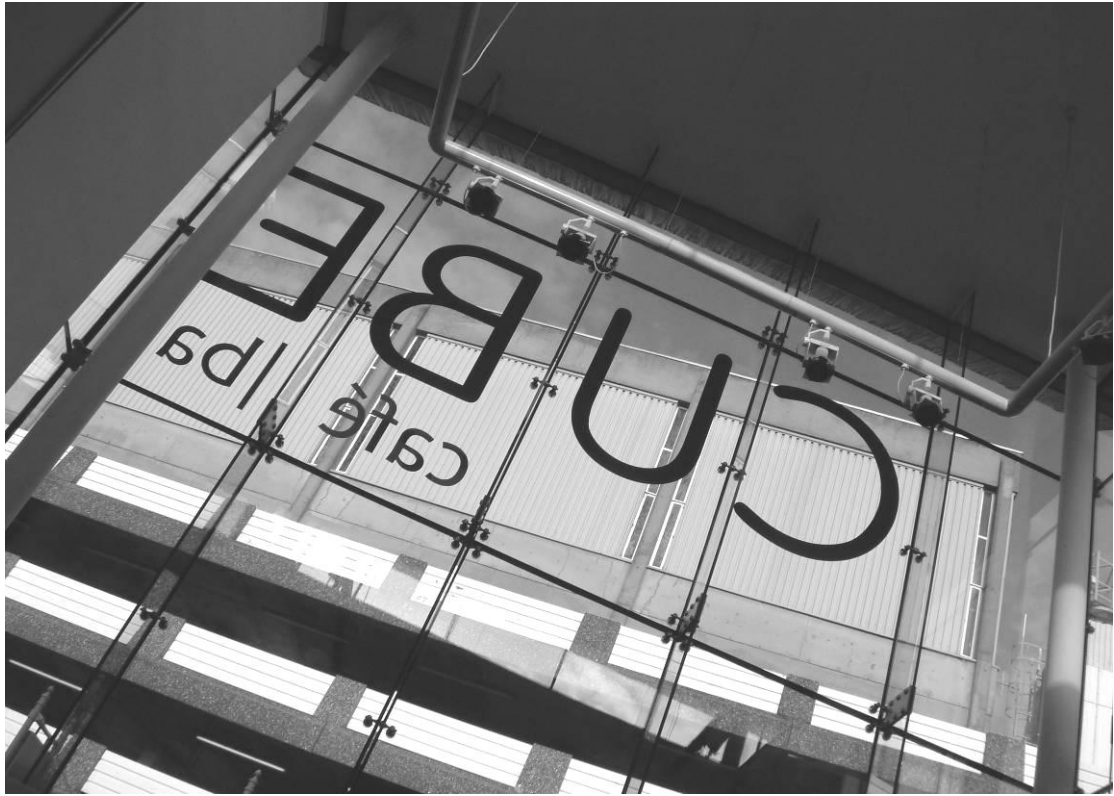
This Board has its own dedicated lighting.

Main Stairwell



Work weighing less than 4kg can be hung off the top rail.
The stairwell has its own dedicated lighting.

The CUBE Gallery



This CUBE is open to the public throughout the day and into the evening and is accessed through the main entrance. There are six exhibition boards in the CUBE all varying in size. Each board has its own dedicated lighting and daylight floods in through the main windows.



The CUBE Gallery (continued)



Facing into the CUBE and working around the space clockwise.
From the left exhibition boards A & B.

A) L x 244 H x 231

B) L x 366 H x 200



C) L x 080 H x 200

The CUBE Gallery (continued)



D) L x 244 H x 168

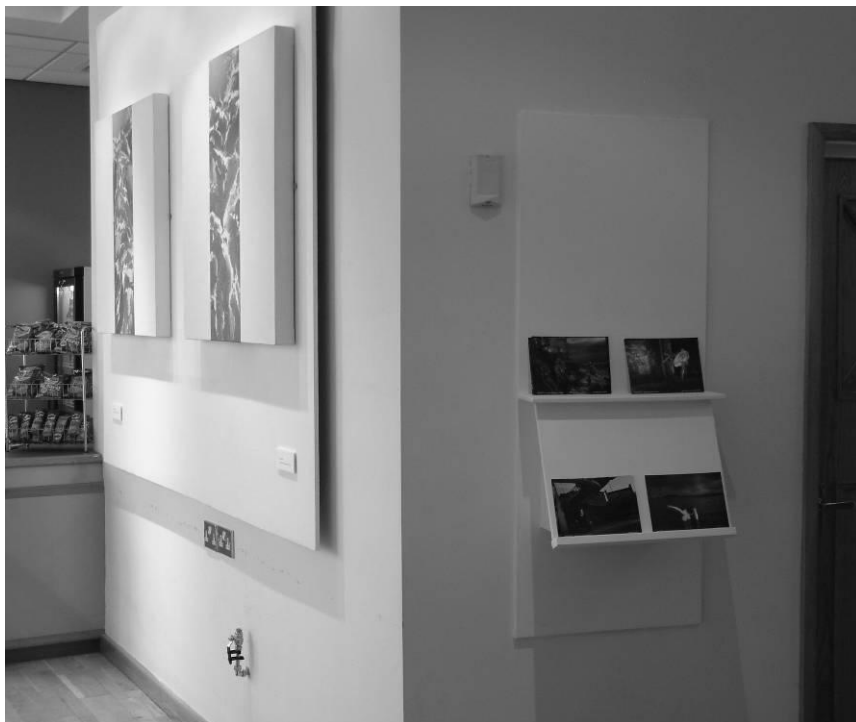


E) L x 196 .H191

The CUBE Gallery (continued)



F) L x 244 H x191



View shows board F and a small board/lectern for artist information.

The CUBE Gallery Annex



The CUBE Gallery Annex is off the main entrance and leads to the Déda Theatre and Studio One. The Annex has exhibition boards on one side and display cases built in to the opposite wall. When not used for display the cases are covered with exhibition boards to increase gallery hanging space.

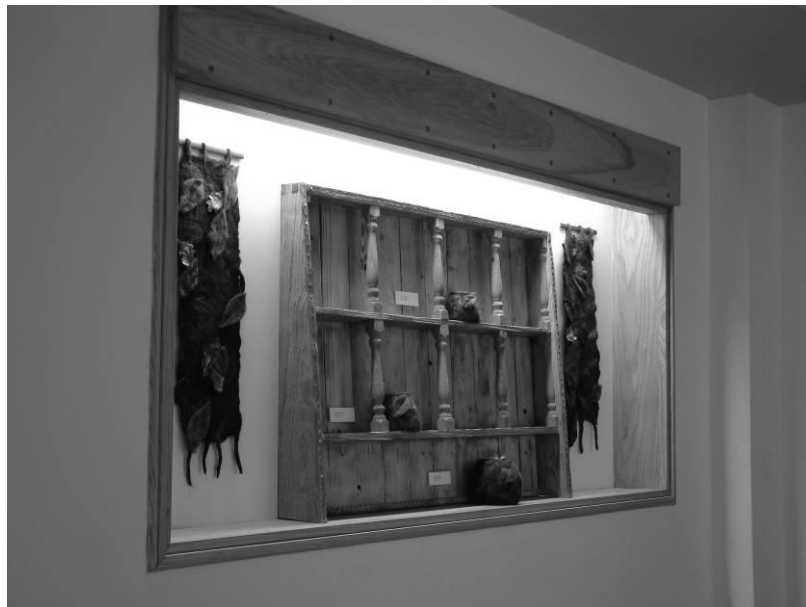
Looking down into the Gallery from the main entrance there are three exhibition boards on the left hand wall. All are L x 244 H x 122. Each board has its own dedicated lighting.



The CUBE Gallery Annex (continued)



View looking backwards toward the main entrance at two of the display cases.



Each case has its own lighting. Work can be fixed to the back wall.
The internal dimensions are L x 176 H x 078 D x 015. The exhibition boards used to cover the display cases are L x 200 H x 110.

Gallery Déda



Gallery Déda and Gallery Déda Annex are on the first floor off the main stairwell. There are four exhibition boards all varying in size. Boards A&D have their own dedicated lighting. From the main doors to the Gallery and working around the wall Anti-clockwise.



A) L x 244 H x 122

Gallery Déda (continued)



B) L x 1001 H x 204



C) L x 122 H x 244

Gallery Déda (continued)



D) L x 180 H x 122

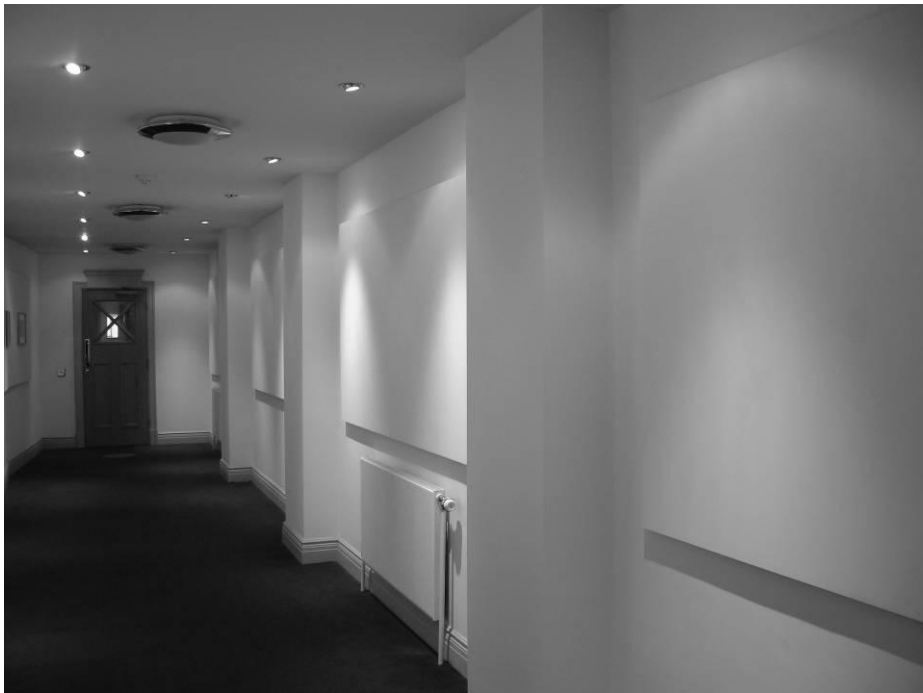
Gallery Déda Annex

The Gallery Déda Annex is off the main area and leads to Studio Two. The Annex has one long exhibition board on the left and four single boards on the opposite wall.

Each board has its own dedicated lighting.



Long board on the left L x 12025 H x 122



Single boards each L x 244 H x 122